



We believe in higher Safety,
faster work & higher productivity.



New Age
Construction Equipment Engineering Company

An ISO 9001:2015 Company



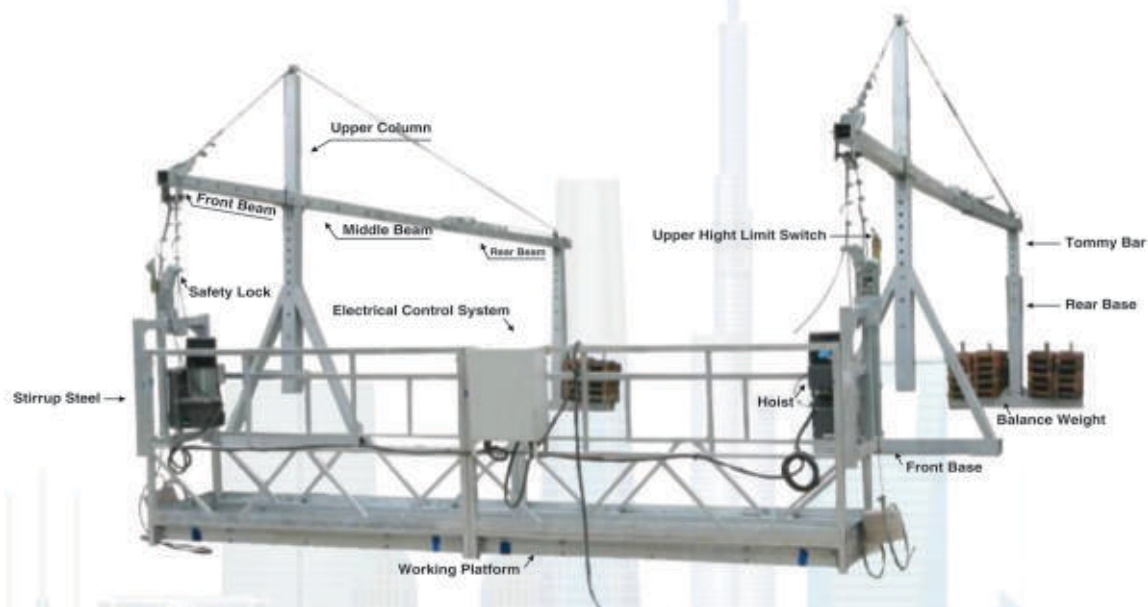
New Age
Construction Equipment Engineering Company
An ISO 9001:2015 Company

The Company, At A Glance

New Age Construction Equipment Engineering Company is a Rajkot, Gujarat based leading manufacturer of construction equipment like Rope suspended platforms, bar bending machine, bar cutting machine & various types of building construction equipment.

We strictly comply with the ISO 9001 : 2015 certification & our products have also received CE certification. The suspended access equipment developed by us is featured in strong construction adaptability, higher construction height, less occupation of construction land, high construction efficiency, easy erection, less labour need and etc.

New Age has started supplying construction equipments since 2011, within 7 years company has achieved remarkable growth in supplying various construction equipments. New Age has gained more than 150 satisfied customers across India.



Suspended Platform Type

L Shape (90°) RSP

Square Shape RSP

Round Shape RSP

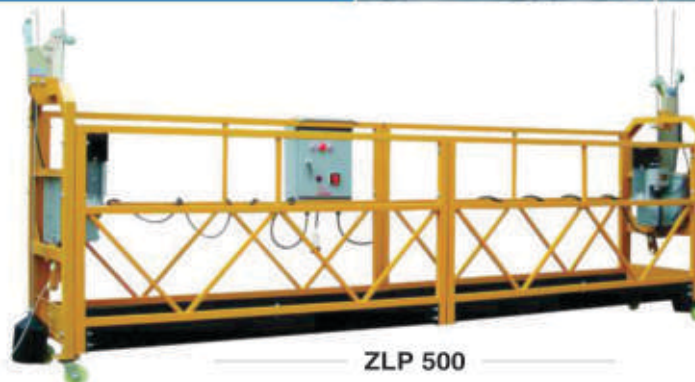
Curve Shape (C) RSP



Models of Suspended Platform



ZLP 250



ZLP 500



ZLP 800-1(2.5)

Technical Data of Suspended Platform

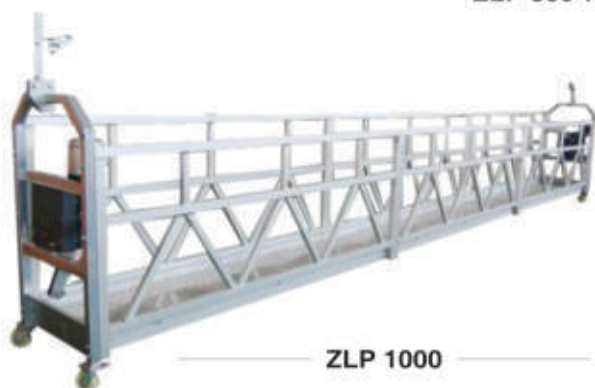
Model Type			ZLP 250	ZLP 800-1(2.5)	ZLP 500
Rated Load			250 kg	400 kg	400 kg
Lifting Speed			8.2m/min	8.2m/min	9m/min
Max Lifting Height			100 Meter	100 Meter	100 Meter
Dimension of platform(L*W*H)			1.2*0.69*1.18m	2.5m x0.69m x 1.45m	(2.5m+2.5m) x 0.69m x 1.45m
Suspension mechanism	Front beam overhang		1.3 ~1.6 m	1.3 ~1.7 m	1.3 ~1.7 m
	Adjustable Height		1.15~1.6 m	1.15~1.75 m	1.15~1.75 m
Hoist	Model		LTD 8.0	LTD 8	LTD 8.0
	Lifting force		8 KN	8 KN	8 KN
	Motor	Power	1.8 KW	1.8 KW	1.8 KW
		Voltage	415 V, 50 HZ , 3 phase	415 V, 50 HZ , 3 phase	415 V, 50 HZ, 3 phase
		Rotation speed	1400 R/Min.	1400 R/Min.	1400 R/Min.
		Brake Torque	15.2 Nm	15.2 Nm	15.2 Nm
Safety lock	Type		Tilt proof safety lock	Tilt proof safety lock	Tilt proof safety lock
	Locking cable angel		-	3-8 degree	3-8 degree
	Allowable impulsive force		20 KN	20 KN	20 KN
Weight	Suspension platform including hoist, safety lock, electric control panel.		198 kg	270 kg	360 kg
	Suspension mechanism		162 kg	400 kg	400 kg
	Counterweight		500 kg	750 kg	750 kg
	Whole machine weight without steel wire rope & power cable		860 kg	1420 kg	1510 kg
Wire rope	Type		4X31SW+FC-8.6	4X31SW+FC-8.6	4X31SW+FC-8.6
Platform type			Hot Dip Galvanized	Hot Dip Galvanized	Hot Dip Galvanized



Models of Suspended Platform



ZLP 800-7.5mtr



ZLP 1000



ZLP 630-L SHAPE

Technical Data of Suspended Platform

Model Type			ZLP 800-7.5mtr	ZLP 630-L SHAPE	ZLP 1000
Rated Load			800 kg.	630 KG	1000 kg
Lifting Speed			9 m/min	9m/min	8.2m/min
Max Lifting Height			100 Meter	100 Meter	100 Meter
Dimension of platform(L*W*H)			(2.5m x 2 +1m+1.5m) x 0.69m x 1.45m	(2.5m+2.5m+0.9m+0.9m) x 0.69m x 1.45m	(2.5m x 2 +1m+1.5m) x 0.69m x 1.45m
Suspension mechanism	Front beam overhang		1.3 ~1.7 m	1.3 ~1.7 m	1.3 ~1.7 m
	Adjustable Height		1.15~1.75 m	1.15~1.75 m	1.5~1.75 m
Hoist	Model		LTD 8.0	LTD 6.3	LTD 10.0
	Lifting force		8 KN	8 KN	10 KN
	Motor	Power	1.8 KW	1.8 KW	2.2 KW
		Voltage	415 V, 50 HZ , 3 phase	415 V, 50 HZ , 3 phase	415 V, 50 HZ , 3 phase
		Rotation speed	1400 R/Min.	1400 R/Min.	1400 R/Min.
		Brake Torque	15.2 Nm	15.2 Nm	15.2 Nm
Safety lock	Type		Tilt proof safety lock	Tilt proof safety lock	Tilt proof safety lock
	Locking cable angel		3-8 degree	3-8 degree	3-8 degree
	Allowable impulsive force		20 KN	20 KN	30 KN
Weight	Suspension platform including hoist, safety lock, electric control panel.		540 kg	340 kg	650 kg
	Suspension mechanism		400 kg	400 kg	400 kg
	Counterweight		1000 kg	1000 kg	1200 kg
	Whole machine weight without steel wire rope & power cable		1940 kg	1740 kg	2250 kg
Wire rope	Type		4X31SW+FC-8.6	4X31SW+FC-8.6	4X31SW+NF-9.1
Platform type			Hot Dip Galvanized	Hot Dip Galvanized	Hot Dip Galvanized



New Age

Construction Equipment Engineering Company

An ISO 9001:2015 Company

Available Safety Features in Suspended Platform



Centrifugal Speed Limiter:

If RSP travelling (Up or Down) speed increased beyond the rated speed, this device gets activated and stops RSP operation. This device generally activates during free fall and brake failure conditions.



Electromagnetic Brake with manual release:

Hoist motor is provided with electromagnetic brake as primary holding device.

Manual release mechanism shall help the cradle to be lowered to the ground level in case of power failure.



Over Hoist / Top Limit Switch:

Function of over hoist limit switch is to prevent the over run of the cradle and hitting the suspension mechanism.

When the limit switch level touches upper end, power supply to electrical motor gets stopped.



Over current protection thro' Relay (OLR):

This will be part of electrical control system.

If the electrical motor draws beyond rated current due to overloading, this protection device will cut-off the electrical system.



Anti-Tilting Cut off:

This is a protection system to ensure uniform loading across the platform. If the load is concentrated on one side, the platform will get tilted resulting in unsafe condition.

This device gets actuated once the platform angle is tilted more than 4 Degrees and cuts off the power supply.



Anti-Sway Restriction:

This mechanism avoids the swaying of RSP in the horizontal plane.

A separate wire rope (Laid from building top to ground) will pass through the sway arrestor roller fitted on the platform. This will thrust the platform to remain in the horizontal plane without swaying action. The same shall be used as Fall Arrestor or separately provided as needed.



Overload Cut-off using Load cell and display (Manual / Digital):

Function of over load limit switch is to prevent the over loading of the cradle by alarming the operator. The load will be measured by electronic load cell fitted on the platform. A manual or digital display of the load is also compulsory.



Locking arrangement for upper counter weights:

All the counter weights must be firmly placed on level ground and locked with lock & key arrangement to avoid un-authorized removal of counter weights.



Customization Availability in Suspended Platform



Cable Protecting device:

It increases life of Cable as it stops the platform when cable is pulled.

Extra extension of RSP:

Convenient for working deeply inside working phase and if Terrace/Slab is on outer side than wall, platform can work easily



Wire rope winder:

The wire rope winder is an indispensable device used to pulling back the hoisting rope. It avoid ugliness and danger caused by the dangling rope.



Combination of L Shape & 7.5 mtr:

Combination helps in working on plane phase and inside or outside corner of building at 90 degree as well.



Nylon Rope/Safety rope with Safety belts:

The safety rope also called life rope, when suspended platform rapidly falls due to fault, the safety rope will tighten to prevent the construction workers from falling.



Over head protection: (Adjustable Type)

It protects workers From falling building material like sand, dust, water, etc While working on platform.



W Shape Platform:

Special 'W' Type' frame gives access to labour even at building corners.



Hoist Guard & Motor cover:

Increases life and safety of hoist by protecting it from dust And other building material.



Wheel Attachment on Suspension mechanism:

It minimize time taken in shifting of RSP, as Wheel attachment helps in movement of suspension mechanism on other side without dismantling mechanism and counterweight.



C Shape, Curve Shape, L shape:

Customization will be provided according to Customer requirement.



Mini Lift



Technical Specification:

Model No	NAC mini lift - 150	NAC mini lift - 300	NAC mini lift - 500
Capacity	150 kg	300 kg	500 kg
Height	25-125 meter	25-125 meter	25 – 125 meter
Boom Length	1.9 meter (6.5 Ft)	1.9 meter (6.5 Ft)	2.2 meter (7.2 Ft)
Rotation	360 degree	360 degree	360 degree
Ele. Motor	2 HP	3 HP	5 HP
Wire Rope	10 mm	10 mm	10 mm
Bucket Size	L645 X W645 X H272 mm	L750 X W750 X H350 mm	L 950 X W 920 X H 450 mm
Bucket Volume	0.07 Cu. M	0.130 Cu. M	0.230 Cu. M
Overall Dimension	L3450 X W685 X H 1828	L3825 X W735 X H2100	L 4800 X W 800 X H 2100
Weight	385 Kg	520 Kg	770 kg

Features:

- ◆ Lifting Capacity 150 Kg / 300 Kg / 500 Kg
- ◆ Winch and Holst Mechanism are use
- ◆ Mini lift is operated without any foundation
- ◆ Mini lift can be rotated 360 degree to its rotational axis
- ◆ Manufactured In Detachable Parts for Portability
- ◆ Mini lift start and stop by Push button
- ◆ Auto Mechanical brakes on power and/or drive failure
- ◆ Counter Weight System for balancing
- ◆ Upper height limit stopfor basket automatically
- ◆ Tested Bucket Chain
- ◆ Boom Rotation Locking System
- ◆ Lifting Capacity is tested with full load before dispatch by us



Bar Cutting Machine



Product Description

- ◆ Our Bar Cutting machine adopts Gears, Shafts, Connection ROD and Blades made of high- quality alloyed steel with required heat treatment (quenching/tempering/high frequency) and 12mm thick external case to ensure reliable performances also under heavy loads and long working life.
- ◆ Connection ROD has high hardness degree on attaching part with the blades, Its internal side is made of tin-bronze to avoid abrasions while touching the crankshaft.
- ◆ Thick and durable Blades to ensure accurate cutting with all kinds of steel bar(square blade or moon- shape blade option with press- spring)
- ◆ Dust proof MOTOR with aluminum shell.

MODEL	NCM 35	NCM 42	NCM 52	NCM 55
Motor power	2.2KW (3HP)	5HP	5HP	5.4HP
Motor speed	2880 R/Min	2880 R/Min	2880 R/Min	2880 R/Min
Cutting Speed	93 T/Min	48 T/Min	70 T/Min	41 T/Min
Weight	332 Kg	470 Kg	630 Kg	715 Kg
Dimensions(mm)	940*580*800	1100*500*900	1120*610*970	1270*650*950

SPECIFICATION	NCM 35								NCM 42							
Diameter Of Bars in MM	32	25	20	16	12	10	8	6	36	32	25	20	16	12	10	8
No of TMT bars of 45 kg/mm ²	1	1	2	3	5	6	7	8	1	1	2	2	3	5	6	7
No of TMT bars of 65 kg/mm ²	0	1	1	2	4	5	6	7	0	1	1	2	3	5	6	7

SPECIFICATION	NCM 52								
Diameter Of Bars in MM	42	40	36	32	25	20	16	12	10
No of TMT bars of 45 kg/mm*2	1	1	1	2	2	3	4	5	6
No of TMT bars of 65 kg/mm*2	0	0	1	1	2	3	4	5	6

SPECIFICATION	NCM 55								
Diameter Of Bars in MM	50	42	40	36	32	25	20	16	12
No of TMT bars of 45 kg/mm*2	1	1	1	2	2	2	3	4	6
No of TMT bars of 65 kg/mm*2	0	0	1	1	2	2	3	4	6



Bar Bending Machine



Product Description

- ◆ Our Bar Bending machine adopts the fully enclosed GEAR BOX separated from the working disk for no distortions even under the condition of heavy loads and no oil leaking while lifting the machine.
- ◆ Gears, Gear shafts, working disk, Stop gauge, Saddles, Pile Heads and Pile head bushes made of high-quality alloyed steel with proper heat treatment (quenching/tempering/high frequency) and 3mm thick external case to ensure high performances also under heavy loads and long working life.
- ◆ Dust proof Brake motor and two limit switch to ensure the accuracy of the bending angle also after stopping and restarting.
- ◆ Insert - pin type disk and movable saddles for a precise adjusting of the bending angle.

MODEL	NBM 35	NBM 42	NBM 52	NBM 55
Operation	Automatic (Brake Motor)	Planetary Type (Oil Free)	Planetary Type (Oil Free)	Automatic (Brake Motor)
Motor Power	2.2KW (3HP)	5.4 HP	5.4 HP	5.4 HP
Motor Speed	1440 R/Min	1440 R/Min	1440 R/Min	1440 R/Min
Disk Speed	12 R/Min	10 R/Min	10 R/Min	7.8 R/Min
Weight	345 Kg	350 Kg	380 Kg	540 Kg
Dimension (mm)	750*620*850	810*760*860	850*800*950	910*700*910

SPECIFICATION	NBM 35								NBM 42							
Diameter Of Bars in MM	32	25	20	16	12	10	8	6	36	32	25	20	16	12	10	8
No of TMT bars of 45 kg/mm ²	1	1	2	3	4	5	6	8	1	1	2	3	4	6	7	9
No of TMT bars of 65 kg/mm ²	0	1	1	2	4	5	6	8	0	1	2	2	3	5	6	8

SPECIFICATION	NBM 52								
Diameter Of Bars in MM	42	40	36	32	25	20	16	12	10
No of TMT bars of 45 kg/mm*2	1	1	1	1	2	3	4	6	7
No of TMT bars of 65 kg/mm*2	0	0	1	1	2	3	4	5	6

SPECIFICATION	NCM 55								
Diameter Of Bars in MM	50	42	40	36	32	25	20	16	12
No of TMT bars of 45 kg/mm*2	1	1	1	1	2	2	3	4	6
No of TMT bars of 65 kg/mm*2	0	0	1	1	2	2	3	4	6



Economic Model of Bar Cutting Machine



Product Description

- ◆ Our machine adopts SHAFTS, CONNECTION ROD and BLADES made of high-quality alloyed steel with required heat treatment and 12mm thick external case to ensure reliable performances also under heavy loads and long working life.
- ◆ Thick and durable BLADES (4 edges) to ensure accurate cutting with all kinds of steel bar.

MODEL	GQ 40A	GQ 40B	GQ 50
Motor power	3 KW (4HP)	3 KW	4 KW (5.5 HP)
Motor speed	2860 R/Min	2880 R/min	2880 R/Min
Cutting Speed	32 T/Min	32 T/min	32 T/Min
Weight	380 Kg	360 Kg	505 Kg
Dimensions(mm)	1280*460*700	1280*460*700	1400*500*720

SPECIFICATION	GQ 40A							
Diameter of Bars in MM	36	32	25	20	16	12	10	8
No of Round bars of 45kg/mm ²	1	1	1	2	2	3	4	5
No of TMT bars of 65kg/mm ²	1	1	1	2	2	3	3	4

SPECIFICATION	GQ 40B						
Diameter of Bars in MM	32	25	20	16	12	10	8
No of Round bars of 45kg/mm ²	1	1	2	2	3	3	4
No of TMT bars of 65kg/mm ²	0	1	2	1	2	2	3

SPECIFICATION	GQ 50							
Diameter of Bars in MM	40	36	32	25	20	16	12	10
No of Round bars of 45kg/mm ²	1	1	1	2	2	3	4	4
No of TMT bars of 65kg/mm ²	1	1	1	2	2	2	3	3



Economic Model of Bar Bending Machine



Product Description

- ◆ Our Machine adopts the fully enclosed GEAR BOX for less distortions even under the condition of heavy loads.
- ◆ GEAR SHAFTS, WORKING DISK, STOP GAUGE, SADDLES, PILE HEAD and PILE HEAD BUSHES made of forged high-quality alloyed steel with proper heat treatment (quenching/tempering/ high frequency) and 2 mm thick external case to ensure high performances also under heavy loads and long working life.
- ◆ TWO LIMIT-SWITCH to ensure the accuracy of the bending angle.

MODEL	GW 40A	GW 40B	GW 50
Operation	Automatic	Planetary Type (Oil Free)	Automatic
Motor power	3 KW (4HP)	1.5 KW	4 KW (5.5 HP)
Motor speed	1430 R/Min	1440 R/min	1440 R/Min
Disk Speed	8 - 11 R/Min	7 R/min	9 R/Min
Weight	310 Kg	280 Kg	476 Kg
Dimensions(mm)	850*760*800	850*760*800	1000*800*900

SPECIFICATION	GW 40A							
Diameter of Bars in MM	36	32	25	20	16	12	10	8
No of TMT bars of 45kg/mm ²	1	1	2	2	3	3	4	5
No of TMT bars of 65kg/mm ²	0	1	2	2	2	2	3	4

SPECIFICATION	GW 40B							
Diameter of Bars in MM	32	25	20	16	12	10	8	
No of TMT bars of 45kg/mm ²	1	1	1	2	2	3	4	
No of TMT bars of 65kg/mm ²	0	0	1	1	2	2	3	

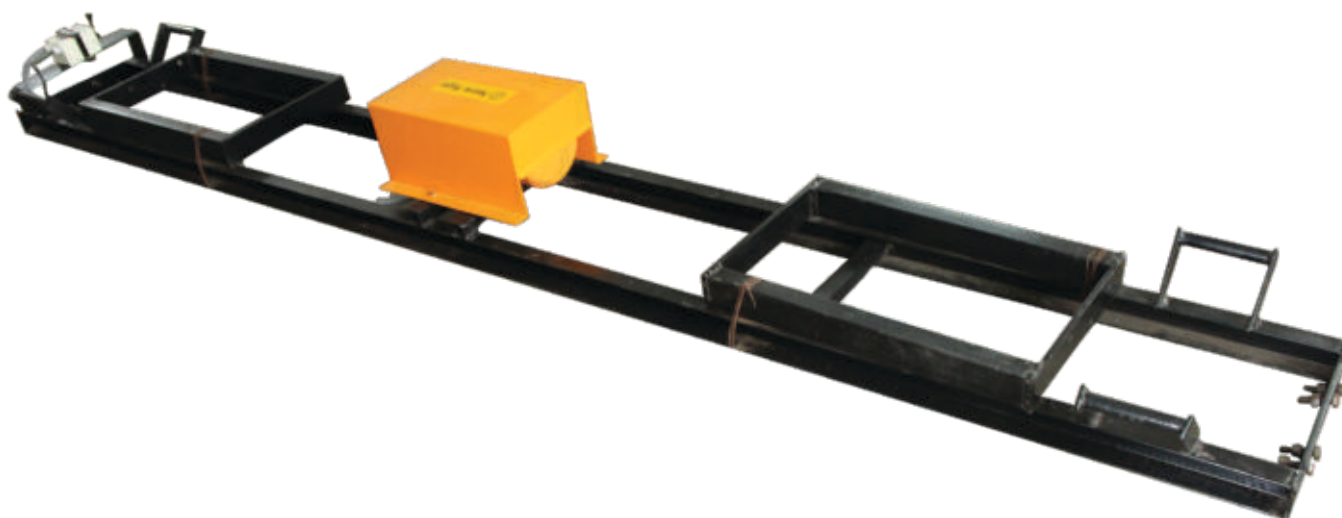
SPECIFICATION	GW 50							
Diameter of Bars in MM	40	36	32	25	20	16	12	10
No of TMT bars of 45kg/mm ²	1	1	1	2	2	3	4	5
No of TMT bars of 65kg/mm ²	1	1	1	2	2	2	3	4



Treamix System

Vibrating Screed

Model No	NAC VS
Prime Mover	2 HP Single / Three Phase Vibrating Electric Motor
Beams	Manufactured from M.S. Channel
Dimensions	L 3375 [Extendable by 635 mm on both ends] x W 400 x H 340 mm
Weight	126 kg



Vacuum Pump

Model No	NAC VP
Prime Mover	5 HP motor
Pressure	600 Mercuri (710mm.hg)
Suction Capacity	50 CFM or 80 m3/h
Top Mat	4 x 4.5 meters
Filter Mat/Sieve Mat	2 x 3.8 meters
Wheels	305 x 8pneumatic tyre – 4nos
Dimensions	L1720 x W800 x H1050 mm





Treamix System



Power Trowel Cum Floater

Model No	NAC PTCF
Diameter	1000 mm
Prime Mover	3 HP dual speed three phase motor
Output Speed	60
Handle Length	1520 mm
Disc	3.15 mm T X Dia 990 mm
Trowelling Blade	4mm thick blades – 4 Nos
Stopper	Clutch type stopper for immediate stop action
Dimensions	L 2230 x W 1080 x H 1330 mm
Weight	130 Kg

Groove Cutter

Model No	NAC GC
Prime Mover	7.5 HP Electric motor with MCB switch, 2800rpm
Blade Diameter Option	14"/15"/16"
Blade Thickness Option	3 mm/ 4mm/ 5mm
Cutting Speed	25mph
Cutting Depth	Green Concrete 100 mm, Dry concrete 60 mm
Water Tank	12 ltr
Wheels	Rubber coated wheels -2 nos
Overall Dimensions	L 1460 x W600 x H900 mm
Weight	162 kg





Mini Mixer & Earth Compactor



Mini Mixer

Model No	NAC 500
Capacity	5 / 3.5 cft
Prime Mover	3.5 HP air cooled HSD diesel Engine / 1.5 HP Single Phase electric motor
Drum Speed	18 - 20 rpm
Wheels	Metal / Pneumatic
Drum Type	Tilting ; 360 degree swivel for easy and complete discharge
Mixing Drum & Blades	Heavy Duty 3.15 mm drum mounted on taper roller bearing and heavy duty M.S. blades for mixing
Chassis	Heavy duty M.S. chassis
Dimensions	L 2200 X W 920 X H 1360 mm
Weight	390 kg

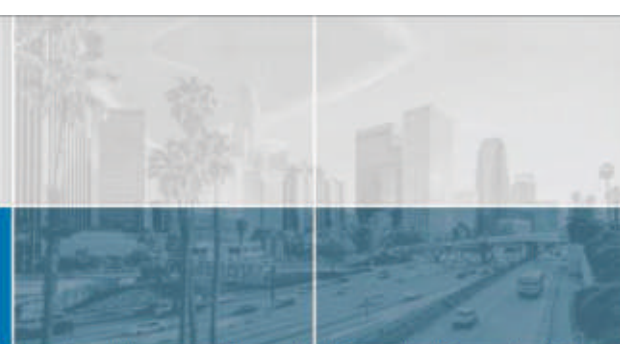
Earth Compactor

Model No	NAC EC
Capacity	1 – 2 Tons
Prime Mover	3 HP Motor / 5 HP Diesel Engine
Plate Thickness	10 mm
Plate Size	L 490 x W 465 mm
Travel Direction	Forward
Dimensions	L 775 x W 470 x H 685 mm
Weight	173 kg





Concrete Mixer



Concrete Mixer

Model No	NAC 1000 C	NAC 1000 H	NAC 1000 HF
Capacity	10/7 cft	10/7 cft	10/7 cft
Prime Mover	6.5 HP air cooled HSD diesel engine/ 5 HP electric motor	7.5 HP Air cooled HSD engine/ 5 HP electric motor	6.5 HP air cooled HSD diesel engine/ 3 HP electric motor
Hopper	3.15 mm thick M.S. Hopper Mechanically operated, Clutch type	3.15 mm thick M.S. Hopper Hydraulically operated with heavy duty power pack.	Without hopper, hand feed
Wire Rope/ hydraulic system	10mm	Single action hydraulic jack. Single spool with manually operated control valve, hence easy to operate with any unskilled person, ISI mark high pressure hoses to circulate the oil.	
Wheels	600 X 16 pneumatic tyre with hub & bearing system, and pressed steel plate rims-4 nos		
Chassis	Heavy duty M.S 125 X 65 mm channel chassis equipped with jack on all four sides for leveling the machine.		Heavy duty M.S. 100 X 50 mm channel chassis
Handi Yoke	100 X 100 X 5 mm seamless M.S pipe, Bearing system		
Drive chain	Rolon brand	Rolon brand	Rolon brand
Mixing drum and Blades	Heavy Duty CI Lower drum 3.15mm M.S. upper drum and heavy duty M.S. blades for mixing		
Drum Type	Tilting	Tilting	Tilting
Dimensions	L 2620 X W 2180 X H 2825 mm	L 2640 X W 2060 X H 2960 mm	L 2470 X W 1270 X H 1900 mm
Weight	1450 kg	1360 kg	900 kg



Tower Hoist



Special Features:

- ◆ Easy to install
- ◆ Scaffolding 'H-frames' of B-Class, ISI marked pipe
- ◆ No Foundation Required
- ◆ 12 mm Wire rope
- ◆ Heavy Duty Tower

Tower Hoist

Model No	NAC TH
Capacity	Upto 1000 kg gross load
Height	Upto 200 ft
Prime Mover	Air Cooled diesel Engine / Electric Motor suitable to required height
Column / Tower	50 X 50 X 6 mm angle
Wire Rope	12 mm
Drive	Friction Roller Type
Scaffolding	H frame - B Class Ø 31.75 mm pipe ISI Mark, & Scissors of 30 X 30 X 3 mm
Skip Unit	Heavy Duty with safety lock
Bucket Capacity	0.25 cubic meters
Wheels	500 X 19 pneumatic tyre with hub & bearing system, and pressed steel plate rims - 4 Nos



New Age
Construction Equipment Engineering Company
An ISO 9001:2015 Company

Site Pictures





New Age
Construction Equipment Engineering Company
An ISO 9001:2015 Company

Site Pictures





New Age
Construction Equipment Engineering Company
An ISO 9001:2015 Company

Our Customers



AkzoNobel



AL FARA'A
INTER PROJECTS



ALCOB
India Pvt. Ltd.



B.L. HASHYAP
WE BUILD YOUR WORLD





Our All India Sales And Service Network

: Authorised Dealer :

Our All India Sales
And Service Network



New Age Construction Equipment Engineering Company

An ISO 9001:2015 Company

Head Office:

Office No. 301, Dhanrajni Complex, Dr. Yagnik Road,
Rajkot- 360 001, (Gujarat) India.

Branch Office:

Mumbai | Delhi | Kolkata | Hyderabad | Bengaluru | Chennai

Factory:

Galaxy Industrial Estate, Survey No. 275, Plot No. 4/B,
Shapur (Veraval), Dist: Rajkot-360 002, (Gujarat) India.

Sales

Mo.: +91 95101 10776

Service

Mo.: +91 95101 10771